

Update Instructions

This unit can be updated through webGUI and USB.

webGUI

- New firmware - Downloaded from <http://www.atlona.com/product/AT-OME-SW32>
- IP address of the unit
- Computer on the same network as the unit
- Username and password to access the webGUI of the unit
- Unit and power supply

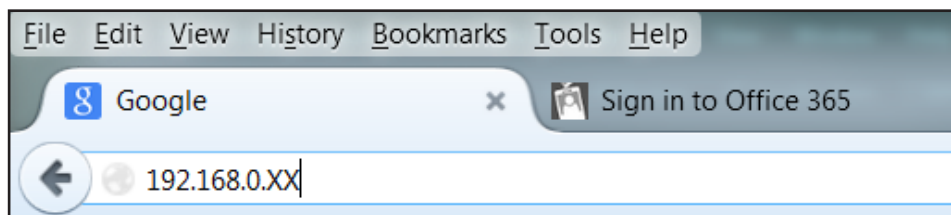
USB

- New firmware - Downloaded from <http://www.atlona.com/product/AT-OME-SW32>
- Mini USB to USB A cable
- Computer with a USB port
- Unit and power supply

WebGUI

1. Plug a LAN cable into the unit and your network router (if not already connected to the network)
2. Type the IP address of the switcher into a web browser (as seen below)

NOTE: Computer must be on the same network as the switcher to access through IP



IMPORTANT: If any stability issues are experienced, disable any anti-virus or firewall that may be interfering with network communication to the switcher. Once set up is done and the webGUI is no longer being used, the firewall and anti-virus can be re-enabled.

A screenshot of a login screen. It features a 'Login' button at the top left. Below it are two input fields: 'Username' and 'Password'. At the bottom is a 'Submit' button.

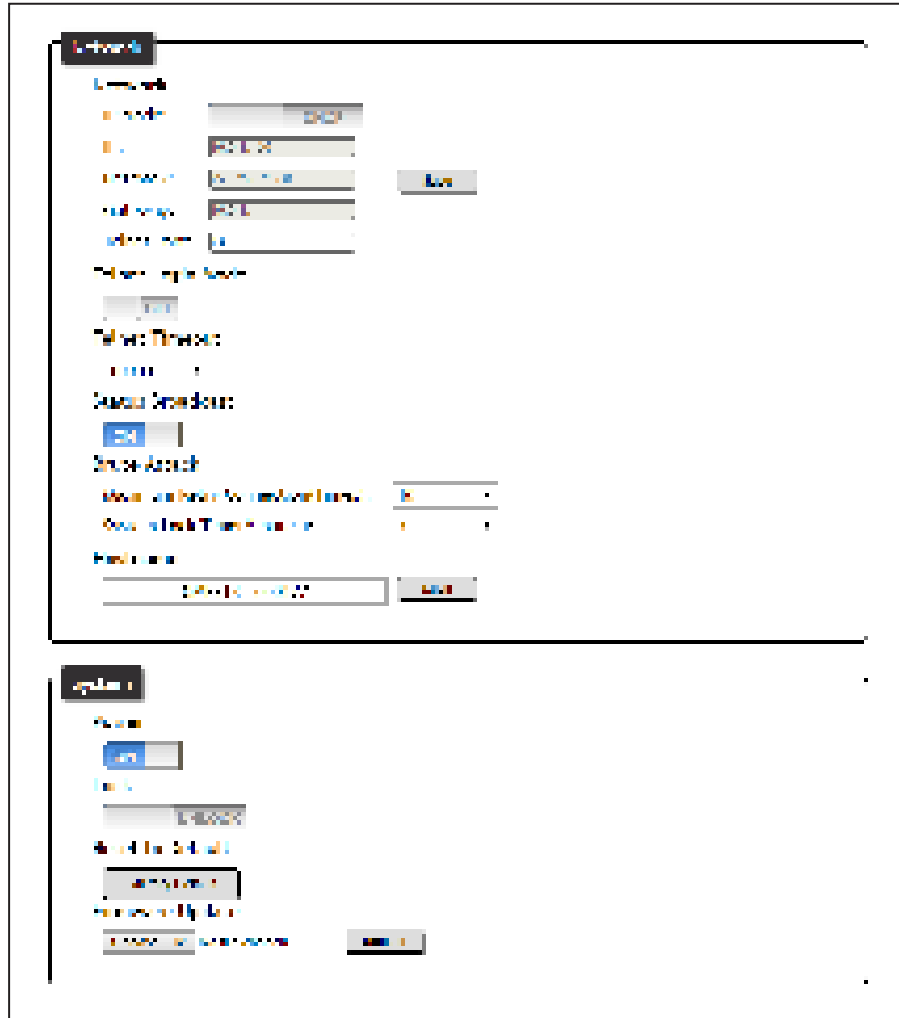
A login screen will appear (this is the same log in for admin and general users).

3. Login using the username and password (this would have been set up during installation)

Update Instructions

Once logged in:

4. Select **System** from the top navigation



5. Select the **Choose File** button under Firmware Update
6. Select the new firmware file that was downloaded from atlona.com
7. Press the **Update** button

A progress bar will display as the update progresses. After the update is complete, if a restart is required the required, the webGUI will display a prompt. The firmware update is now complete and the unit is ready to be used.

USB

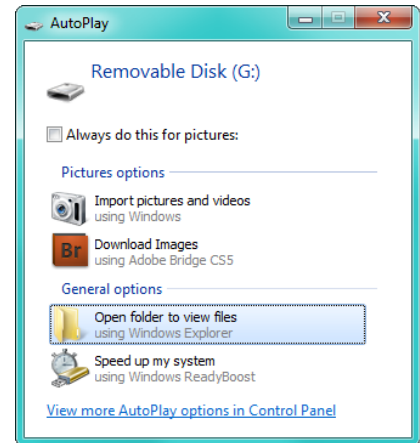
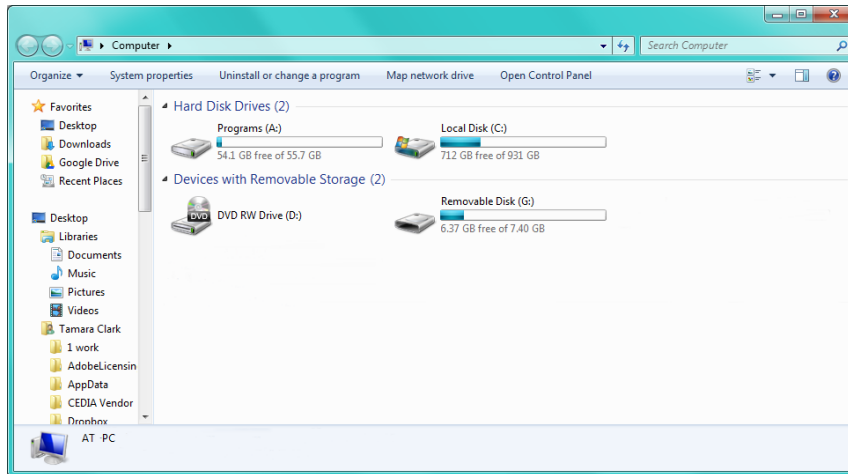
1. Press and hold the **OUTPUT 1** button while plugging the USB Mini to USB A cable to a computer from the FW port
2. Continue holding the button until the USB updater/Auto run window appears, then release it
3. Remove any existing firmware files in the folder

Update Instructions

4. Drag and drop the firmware (*.bin) file into the folder



NOTE: If the computer does not auto detect the connection, open “My Computer” and select the USB drive.



The PWR LED will blink green during the update process. Once the process is done, the unit will automatically reboot.

5. Disconnect the USB cable from the OME-SW32 and the computer

The update process is complete and the unit is ready to be used